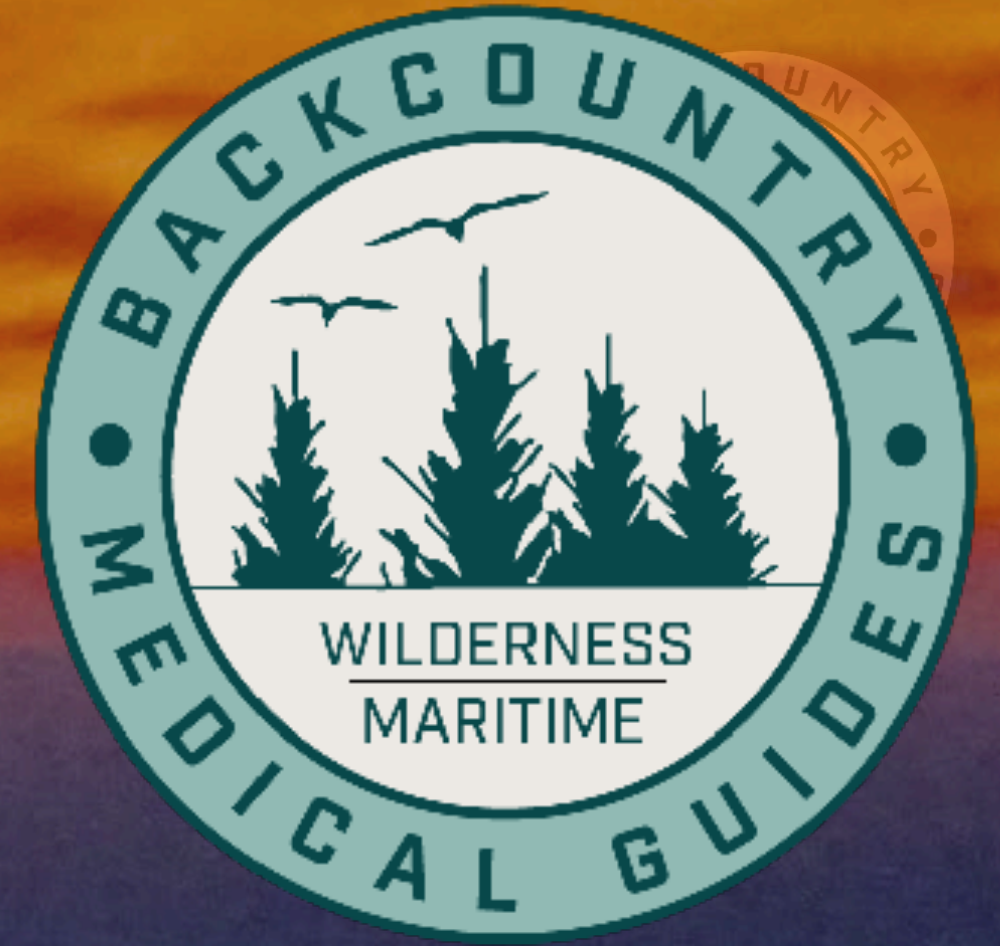


PACCUP 2020 WEBINAR OUTLINE



- Telemedicine
- Pre Trip Planning
- Case Studies
- Commercial Kits
- Types of Equipment
- Reference Materials

JOHN TAUSSIG

- ▶ Flight Paramedic
- ▶ Executive Director-Backcountry Medical Guides
- ▶ 50 Ton USCG Captain
- ▶ jtaussig@backcountrymedicalguides.org
- ▶ 206-412-1613

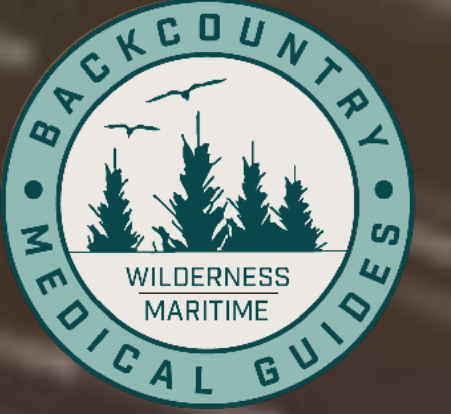


ON-SHORE TELEMEDICINE CONSULT



**GEORGE WASHINGTON UNIVERSITY HOSPITAL
WORLDWIDE MARITIME MEDICAL ACCESS**

BEFORE YOU GO...



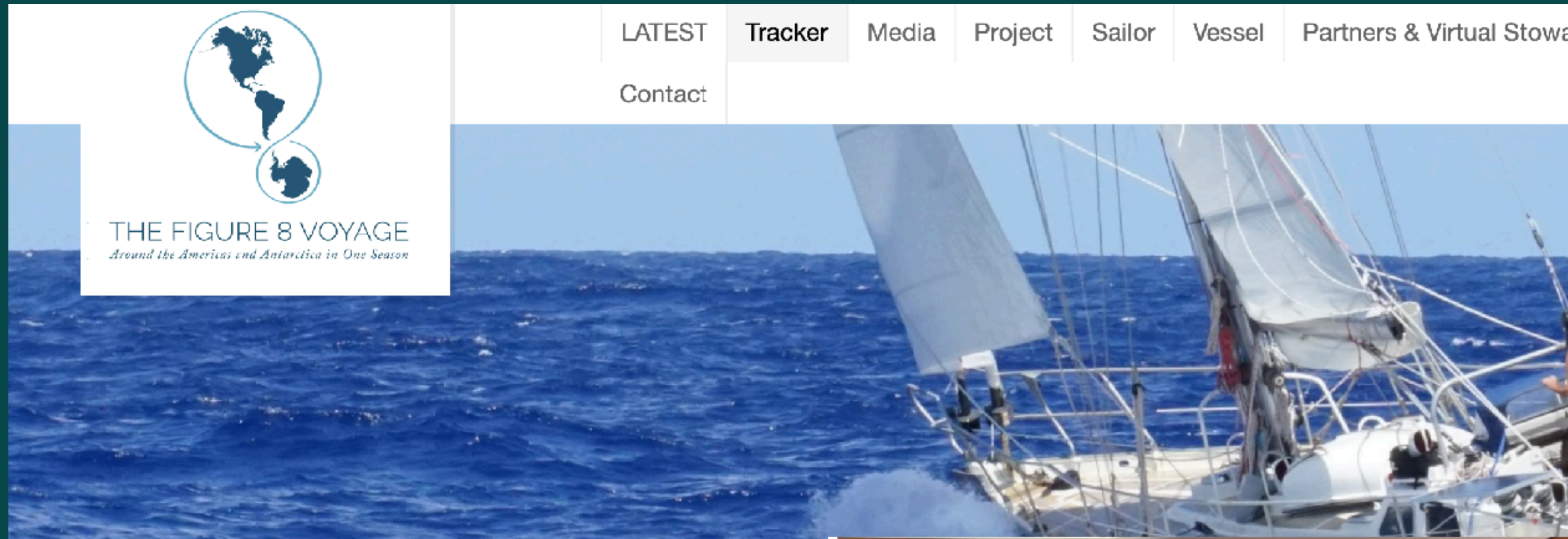
- » **KNOW THE BOAT**
- » **CHECK THE WEATHER FORECAST AND PLAN ACCORDINGLY. NOTE SUNRISE, SUNSET, TIDES, AND LOCAL CURRENTS**
- » **BRIEF PASSENGERS ON SAFETY: LOCATION OF PFDS, TETHERS, FIRE EXTINGUISHERS, ENGINE SHUTDOWN, HEADLAMPS, FIRST AID KIT, ETC.**

BEFORE YOU GO...



- » DEMONSTRATE MOVING AROUND THE BOAT
- » BRING A FIRST AID KIT
- » TURN ON AND TEST RADIO
- » SECURE ELECTRONICS: EPIRB, PLB, LAPTOPS,
GPS, CELL PHONES, TEST
- » REVIEW MAN-OVERBOARD PLAN
- » CONTINUE PERSONAL SAFETY CHECKLIST

WATERPROOF



LITHIUM OR NIMH

BATTERIES ONLY



DURACELL



DURACELL



DURACELL



5202 DEC 1 2003

SAFETY BRIEF

1. **BOARDING/ OFF LOADING SAFETY**
2. **KNOWING WHAT TO GRAB ONTO**
3. **HOW TO WALK ON BOAT- 1 HAND FOR SELF AND BOAT**
4. **COMPANIONWAY STAIRS**
5. **ENGINE SHUTOFF**
6. **FIRE EXTINGUISHERS**
7. **TRIP AND FALL HAZARDS**
8. **MOVING PARTS OF BOAT**
9. **LIFE JACKETS**
10. **HEAD LOCATION AND OPERATION**
11. **EMERGENCY PROCEDURES**
12. **SUNSCREEN/ WATER/ HYDRATE/ WARMTH**
13. **COMMANDS**
14. **TRIP PLAN**
15. **QUESTIONS**

PERSON IN WATER (PIW)

COCKPIT

1. **ALARM MAN OVERBOARD WITH LOCATION FELL**
2. **THROWABLE DEPLOYMENT TO PERSON IN WATER (PIW)**
3. **ASSIGN SPOTTER AND MAINTAIN POINTING AT PIW**
4. **MARK GPS**
5. **RADIO SIGNAL: VHF CHANNEL 16: "PAN PAN PAN PAN PAN PAN" NAME OF VESSEL, LOCATION, NATURE OF CALL**

APPROACH

- **LEEWARD APPROACH TO VICTIM WHEN UPWIND**
- **WINDWARD APPROACH IS FOR WHEN PIW IS DOWNWIND**

PROCEDURE MANUAL

1. **MAN OVER BOARD (MOB)**
2. **FIRE ON BOARD**
3. **SAFETY BRIEF**
4. **REEFING**
5. **NIGHT OPERATIONS**
6. **ABANDON SHIP & LIFE RAFT DEPLOYMENT**
7. **DITCH BAG CONTENTS**
8. **HEAVY WEATHER SAILING**
9. **TAKING ON WATER / STRUCTURAL DAMAGE**
10. **EPIRB/ SPOT/ PLB**
11. **FLARES**
12. **RADIO COMMUNICATIONS**
13. **DINGY OPERATIONS**
14. **BOAT SYSTEMS**

BEFORE YOU GO...

- » BE IN GOOD HEALTH
- » BE PREPARED
- » ATTEND TO OBVIOUS
MEDICAL PROBLEMS
- » USE COMMON SENSE





MARINE FIRST AID KITS

COMMON PRINCIPLES TO CONSIDER

- Analyze Group Capabilities, Trip Conditions, Common Emergencies
- Get To Know Members Of Your Group
- Make Sure Trip Is Appropriate For The Group
- Allow Each Person To Carry A Personal Kit
- Understand Equipment And Contents Of Kit
- Bring 'Multi-Use' Materials
- If You Elect To 'Omit' Any Contents, Make Sure To Have A Good Plan Of How-To-Improvise And Treat Life Threats



KNOW THE CAPABILITIES OF YOUR MEMBERS

CPR/ 1st Aid (6 hours)

Wilderness/ Maritime First Aid (18 hours)

Wilderness First Responder (80 hours)

EMT (200 hours)

Paramedic (~1500 hours)

RN (2-3 years)

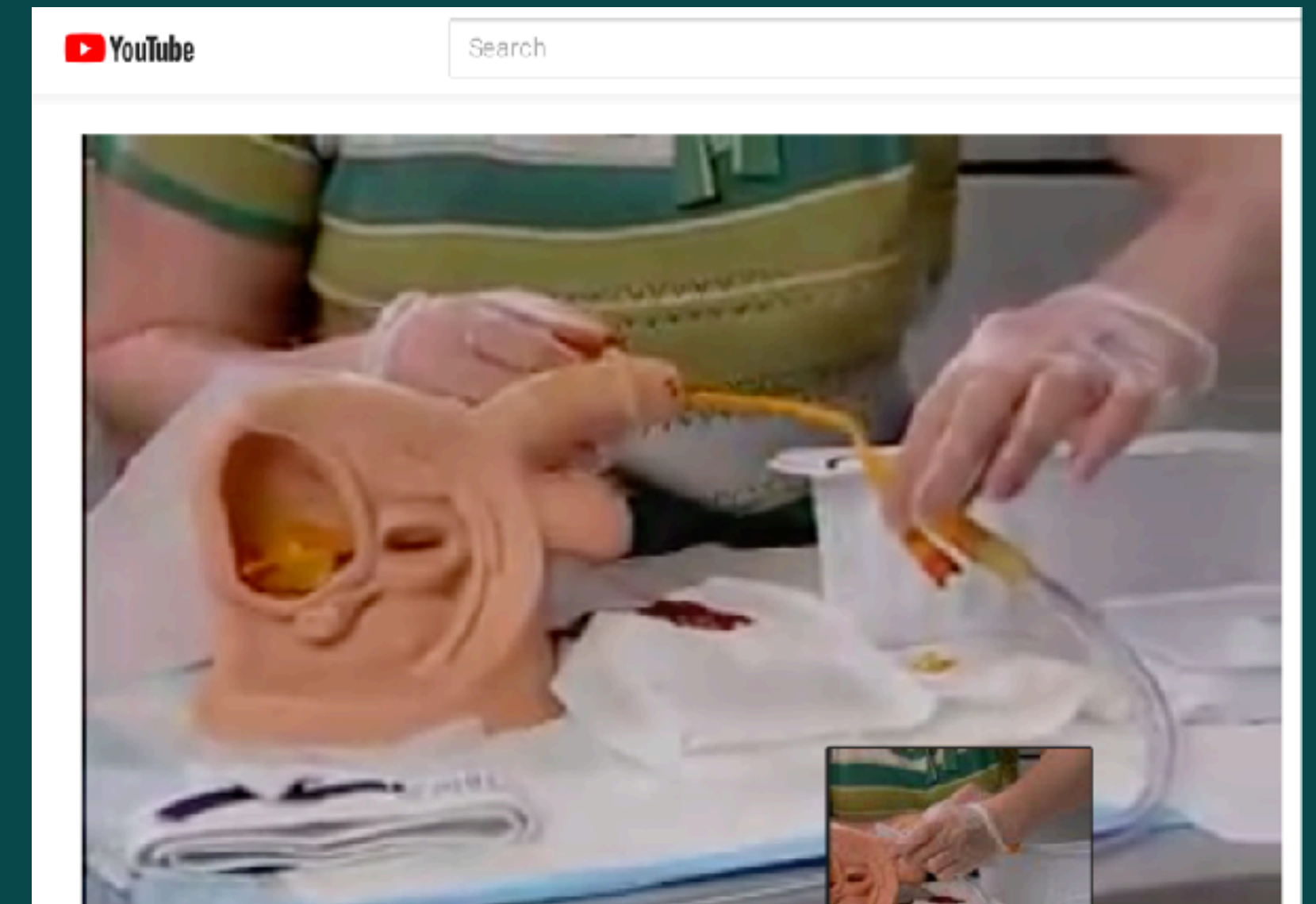
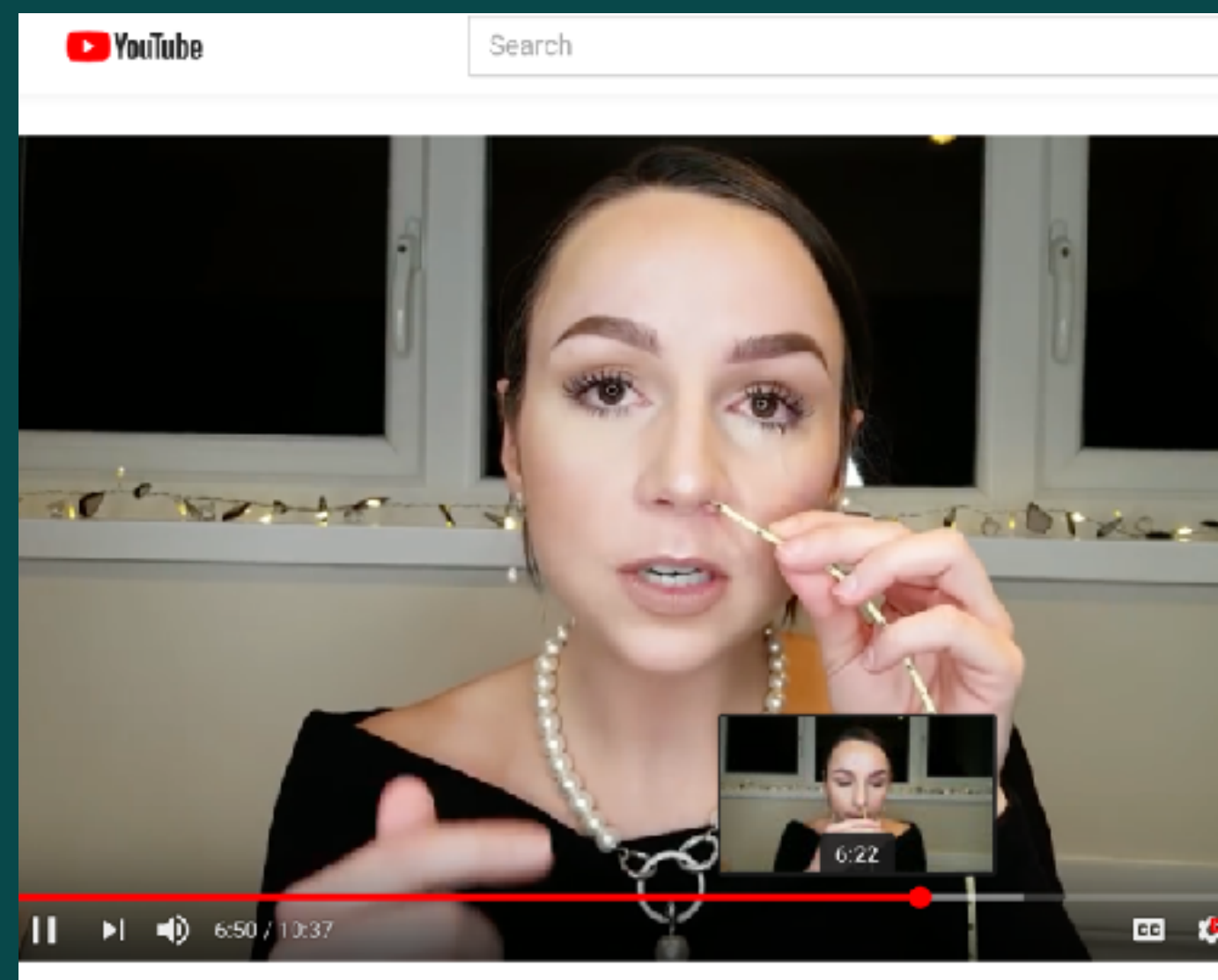
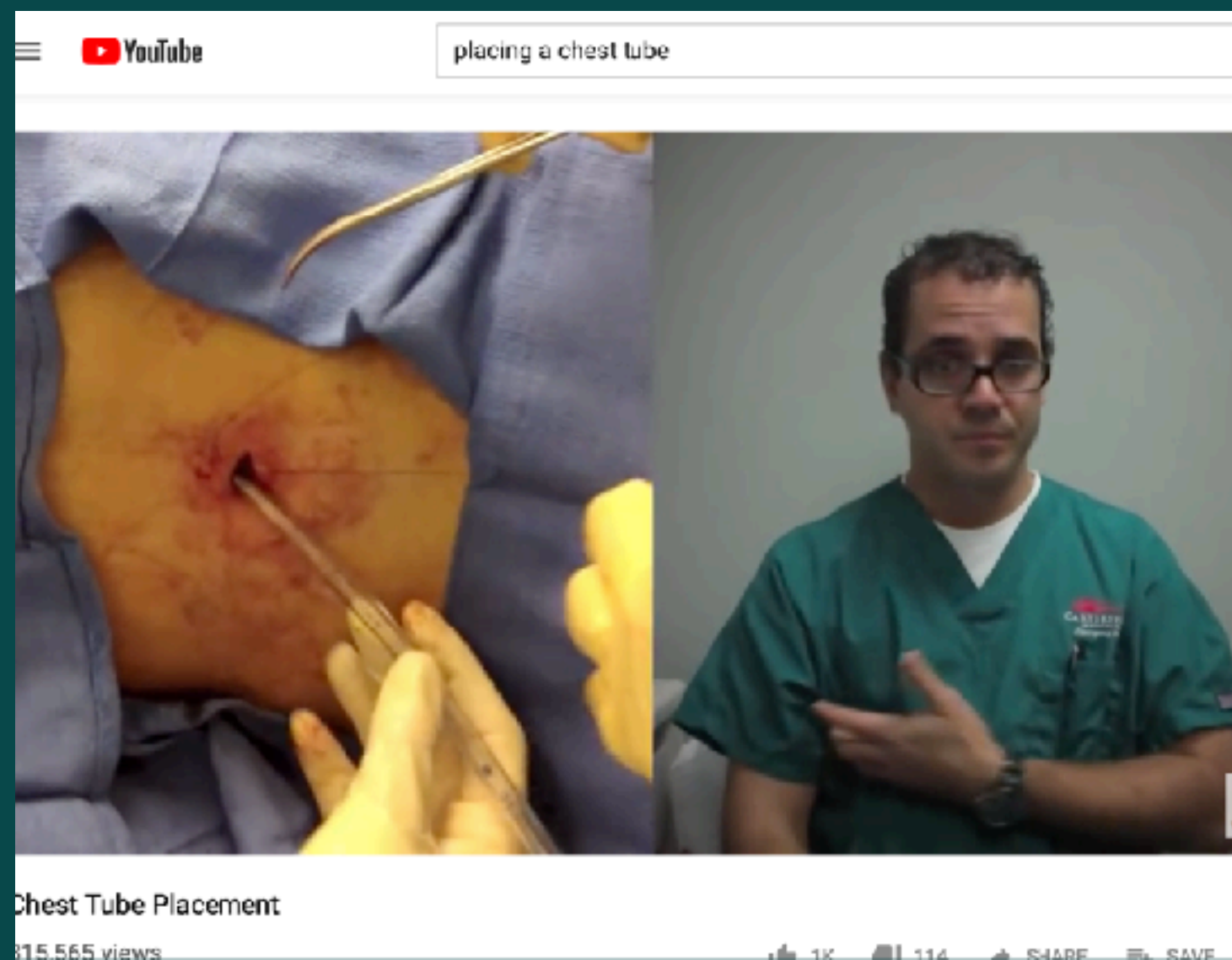
Physician Assistant (2-3 years)

MD/ DO (6+ years)



****KNOW THE SPECIALTY/ EXPERIENCE
OF THE PROVIDER.**

KNOW THE CAPABILITIES OF YOUR MEMBERS



UNDERSTANDING COMMON RISKS

Search Results

[Save and receive alerts for this search](#) [Edit Search](#) [New Search](#)

You searched for **sailing injuries** in *All Content*

1176 results Show results per page Sort by:

Articles (1009)

Images (156)

Video (1)

Web Content (10)

Showing: 1-20

[1](#) [2](#) [3](#) [4](#) [5](#) [6](#) [7](#) [8](#) [9](#) [10](#) [11](#) ... [Next >](#)

☐ Select All [View Abstracts](#) | [Export Citations](#) | [Email a Colleague](#) | [Add to Reading List](#)

- ☐ **Sailing Injury and Illness: Results of an Online Survey** Cited in Scopus: 14 
- Andrew T. Nathanson, Janette Baird, Michael Mello
Wilderness & Environmental Medicine, Vol. 21, Issue 4, p291-297
Published in issue: December 2010
[Preview](#) | [Full-Text HTML](#) | [PDF](#)

- ☐ **Injuries and Fatalities on Sailboats in the United States 2000-2011: An Analysis of US Coast Guard Data** Cited in Scopus: 1
- Kevin M. Ryan, Andrew T. Nathanson, Janette Baird, Jenna Wheelhouse
Wilderness & Environmental Medicine, Vol. 27, Issue 1, p10-18
Published online: December 7, 2015
[Preview](#) | [Full-Text HTML](#) | [PDF](#)

- ☐ **Windsurfing injuries: results of a paper- and Internet-based survey** Cited in Scopus: 52
- Andrew T. Nathanson, Steven E. Reinert
Wilderness & Environmental Medicine, Vol. 10, Issue 4, p218-225
Published in issue: December 1999
[Preview](#) | [PDF](#)

- ☐ **Injury and Illness at the Newport-Bermuda Race 1998-2006** Cited in Scopus: 8
- Andrew T. Nathanson, Edwin G. Fischer, Michael J. Mello, Janette Baird
Wilderness & Environmental Medicine, Vol. 19, Issue 2, p129-132

COMMON PRINCIPLES TO CONSIDER

- Analyze Group Capabilities, Trip Conditions, Common Emergencies
- Get To Know Members Of Your Group
- Make Sure Trip Is Appropriate For The Group
- Allow Each Person To Carry A Personal Kit
- Understand Equipment And Contents Of Kit
- Bring 'Multi-Use' Materials
- If You Elect To 'Omit' Any Contents, Make Sure To Have A Good Plan Of How-To-Improvise And Treat Life Threats



TELEMEDICINE

Telemedicine					Share
File Edit View Insert Format Data Tools Add-ons Help All changes saved in Drive					
100% \$ % .0 .00 123 Arial 10 B I A					
	A	B	C	D	E
1	Company:	Branch/Division:	Pricing:	Contact:	Notes:
2					
3	George Washington University				
4		Maritime	contact for pricing/ find out if this suits our needs.	Derek Andresen, 202-741-2936, dandresen@mfa.gwu.edu	In operation since 1989, Maritime Medical Access (MMA) provides a vi appropriate medical care for shipping vessels, aircraft,yachts and team worldwide telemedicine advice,clinical case management, repatriation, medical equipment and medicine chests all through one centrally mana
5		Telemedicine		Kyle Majchrzak, Business Development Manager, Department of Emergency Medicine, T 202.741.2944, E kmajchrzak@mfa.gwu.edu	To arrange a live demo of our telemedicine capabilities via DigiGoneTM 202-741-2905 or email jbetz@mfa.gwu.edu.
6					
7	Remote Medical International				
8		24/7 Topside Assistance	contact for pricing	(206) 686-4878	Our topside assistance services extend world-class medical advic in the world at any time. The Remote Medical International Global accessible by phone, email, secure video chat software, or telemed takes only seven seconds to speak to a medical coordination spec of case management and provides connection to all of our topside
9					https://www.remotemedical.com/services/247-topside-assistance/
10					
11	United Healthcare Global				
12		Remote Medical	contact for pricing	marketing_info@uhcglobal.com	https://www.uhcglobal.com/global-medical/virtual-health/
13					
14	International SOS				
15		24 hr assitance, topside services	contact for pricing		https://www.internationalsos.com/web-enquiry-form-new-to-internationa
16					
17	Tangiers International				
18			contact for pricing	info@tangiersinternational.com	https://www.tangiersinternational.com/medical-service-solutions/

KIT CONTENTS

WOUNDS/ SOFT TISSUES
MUSCULOSKELETAL
LIFE SUPPORT
MEDICATIONS
SURVIVAL EQUIPMENT

	A	B	C	D	
	MARINE FIRST AID KIT- FULL				
		Wound Management	Price per unit	Price for Package	
		Nitrile Glove			
**		Sponge (gross decon)			
		5x9	0.3	14.97	
		4x4	0.12	11.99	
		Specialty Bandages:			
		knuckle bandages	0.08	7.5	
		blis-t-a-ban	1.99	7.99	
		bandaids (various sizes)	0.02	6.95	
		Roller Gauze	0.62	7.49	
		Steri Strips	0.35	15.47	
		Tweezers	0.22	13.24	
		Tincture of Benzoin	0.5	24.95	
		Trauma Shears	1.25	24.99	
		10-20cc syringe	0.18	17.99	
		18ga catheter tip	0.34	16.9	
		CAT tourniquet	9.59	21.96	
		SWAT-T	11.88		

HOW MUCH TO PAY

ADD TO CART



Adventure Medical Kits Marine
1000
\$300.00

☐ COMPARE

ADD TO CART

ADD TO CART



Adventure Medical Kits Marine
2000
\$595.00

☐ COMPARE

ADD TO CART

ADD TO CART



Adventure Medical Kits Marine
3000
\$795.00

☐ COMPARE

ADD TO CART

ADD TO CART



Adventure Medical
400
\$100.00

☐ COMPARE

ADD TO CART



Global Traveler Prescription
Medications Kit
\$426.00

☐ COMPARE

ADD TO CART



OceanMedix - Cruiser Prescription
Kit
\$1,760.00

☐ COMPARE

ADD TO CART



OceanMedix -
Prescription
Kit
\$990.00

☐ COMPARE

ADD TO CART



Adventure Medical Kits Marine
600 First Aid Kit with Waterproof
Case
\$200.00

☐ COMPARE



Coastal Fishing Vessel Medical Kit
(large)
\$1,090.00

☐ COMPARE



Coastal Fishing Vessel Medical Kit
(medium)
\$986.50

☐ COMPARE



Coastal Fishing Vessel Medical Kit
(small)
\$514.00

☐ COMPARE



OceanMedix - Suture Pack
\$412.00

☐ COMPARE



OceanMedix - Voyager
Prescription Kit
\$2,360.00

☐ COMPARE

[/products/global-traveler-prescription-medications-kit.htm](#) in a new tab



THE STORY OF TWO 1ST AID KITS

INJURIES ON BOARD 1 YEAR AT SEA (2017)



ADDITIONAL AILMENTS FROM CREW



m.c.l tear, UTI, cold sore, norovirus (?), epididimitis, hemorrhoid,
back spasm, back rash, stomach virus, shoulder pain, ear infection,
sunburn, elbow pain, jaw pain, skin rash , possible subluxed
shoulder, seasickness, heat exhaustion

KIT NUMBER 2





REFERENCES

Pre Trip Med Form

SOAP Note

Excel Sheet Marine Equipment

Additional Reading

FIRST AID KIT CONCLUSION

PREVENTION IS THE KEY

CLOTHING

SHOES

NUTRITION

SLEEP

DIET

HEALTH

EQUIPMENT

PLANNING

PREPARATION

CHECKLISTS

TRAINING

FIRST AID KIT CONCLUSION

Each Boat Has Different Factors Influencing Their First Aid Plan

Know How To Treat Life Threats And Stabilize The Patient

Know Your Crews Limits

Know Your Kit Contents And How To Call For Help

Build In Redundancies To Your Evacuation Plan

WILDERNESS AND MARITIME MEDICINE

▶ BACKCOUNTRY MEDICAL GUIDES:

**Custom Maritime Medical courses,
Wilderness First Aid, Wilderness First
Responder**

▶ backcountrymedicalguides.org

▶ 831-295-8336

